

MTB ORIENTEERING WORLD CUP 2018

TEAM LEADERS MEETING 2

21/09/2018



AGENDA

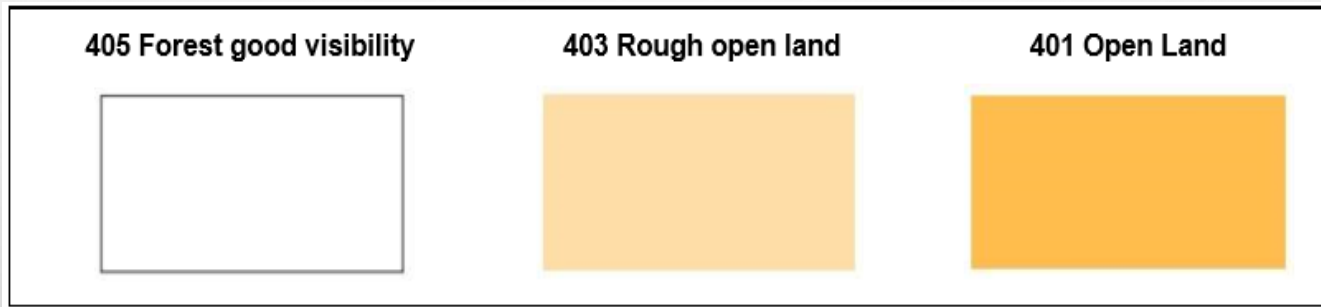


- PROGRAM FOR DAY 2 - SATURDAY, 22TH SEPTEMBER - **LONG DISTANCE**
- WEATHER FORECAST
- TRAVEL & LOGISTICS
- ARENA
- START, TRACKING AND FINISH PROCEDURES
- MAPS AND COURSES
- STARTING GROUPS
- OTHER INFORMATION

SUMMARY OF THE MOST IMPORTANT RULES:



- COMPETITORS MUST GET TO ALL CONTROL POINTS WITH THEIR BIKES.
- RIDING OFF THE TRACK, TRAIL OR PATH IS ALLOWED IN AREAS MARKED AS FOREST OR FREELY RIDE ABLE OPEN AREA (AS FOREST, OPEN LAND AND ROUGH OPEN LAND – ISMTBOM 405, 403 & 401).



- OFF ROAD RIDING IS STRICTLY PROHIBITED IN ALL OTHER AREAS, INCLUDING SETTLEMENTS (527), ROUGH OPEN LAND WITH SCATTERED TREES (404), OPEN LAND WITH SCATTERED TREES (402), FOREST REDUCED VISIBILITY - GREEN(406) AND ORCHARDS (412). COMPETITORS RIDING OFF ROAD IN RESTRICTED AREAS ARE RESPONSIBLE FOR ANY DAMAGE CLAIMED BY THE LANDOWNERS AND WILL BE DISQUALIFIED.
- IF COMPETITORS WANTS TO GO OFF TRACK IN AREAS WHERE IT'S NOT ALLOWED TO RIDE HE/SHE HAS TO CARRY THE BIKE AT LEAST 20 CM ABOVE THE GROUND.

DAY 2 – SATURDAY, 22TH SEPTEMBER

LONG DISTANCE



- 08:00-16:00: OPENING HOURS OF THE EVENT OFFICE AT THE LONG DISTANCE ARENA (S. LUÍS).
- 08:00 – DEADLINE FOR COMPETITORS REFRESHMENT BOTTLES DELIVERY IN ARENA
- 09:00: START FOR LONG DISTANCE COURSE (ME, WE).
- 10:00: START QUARANTINE ACTIVATED. (FINISH QUARANTINE TILL 10:00)
- 11:30: START FOR OPEN AND PORTUGUESE LEAGUE LONG DISTANCE.
- **15:00: DEADLINE FOR NAMES/START GROUP ALLOCATION FOR SPRINT COMPETITION AT THE EO (ARENA S. LUÍS)**
- **15:00: PRIZE GIVING CEREMONY FOR LONG DISTANCE (SÃO LUÍS).**
- 18:00: TEAM LEADERS MEETING (TLM) AT BIBLIOTECA JOSÉ SARAMAGO (ODEMIRA)
- 20:00: BANQUET AT BOMBEIROS VOLUNTÁRIOS DE ODEMIRA

WEATHER FORECAST



Saturday

	02 ⁰⁰	05 ⁰⁰	08 ⁰⁰	11 ⁰⁰	14 ⁰⁰	17 ⁰⁰	20 ⁰⁰	23 ⁰⁰
Temperature (°C)	17°	15°	16°	29°	37°	34°	25°	21°
Temperature felt (°C)	17°	15°	15°	29°	38°	32°	26°	21°
Wind direction	↗NE	↗NE	↙ENE	←E	→W	↙NW	↙NW	↘WSW
Wind speed (km/h)	7-13	7-18	9-17	9-14	9-19	19-24	7-28	4-8
Relative humidity	87%	93%	85%	37%	26%	32%	61%	68%
Desert dust concentration*								
Precipitation (mm/3h)	-	-	-	-	-	-	-	-
Precipitation probability	0%	0%	0%	0%	0%	0%	0%	0%

TRAVEL & LOGISTICS



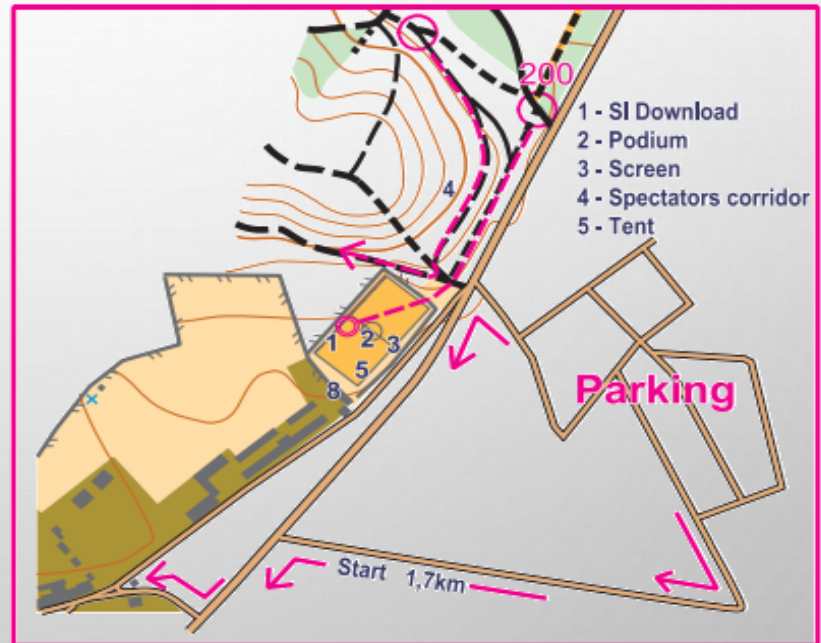
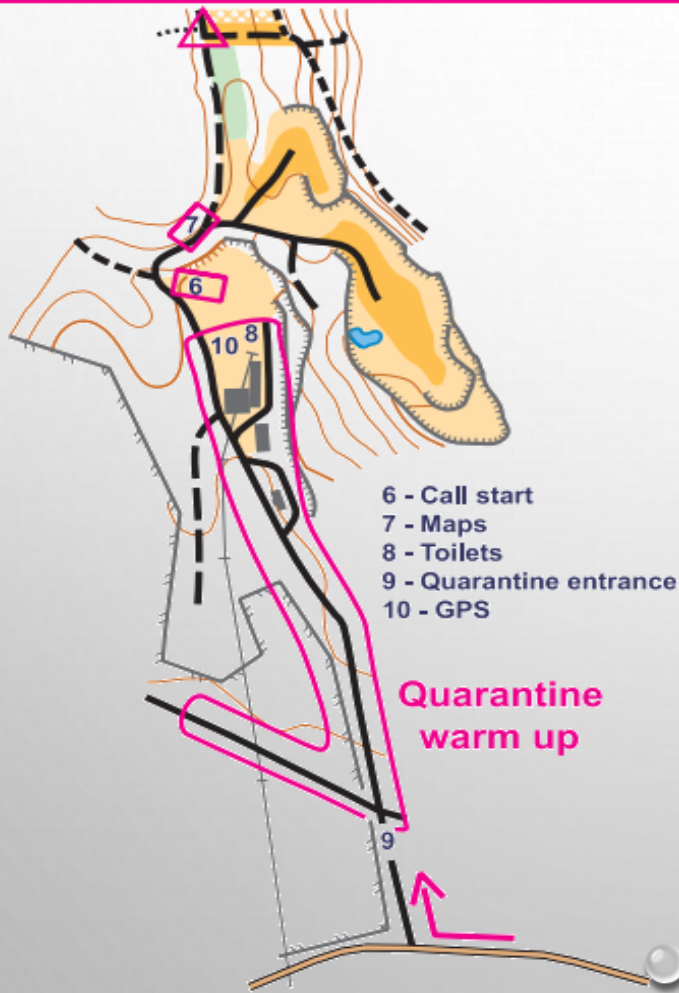
- Distance from EC to the arena in São Luís: 16 Km (20-25 min driving).
- Directions: follow the direction S. Luís / Sines (EN120 – National road 120). There will be orienteering guiding arrows in São Luís.
- Parking: In areas marked with signs.
- Competitors' clothes and other personal belongings will be transported by the organiser from the start quarantine to the finish arena. Please pack your things in a plastic bag provided at the start quarantine and mark the bag with your start number.

ARENA



LONG DISTANCE

FINISH AND START ARENA



START, TIME KEEPING SYSTEM AND FINISH PROCEDURES



- **START PROCEDURES:**

- SI-CLEAR IS FOUND OUTSIDE START BOXES.
- THERE ARE 3 START BOXES:
 - BOX 1 (- 3 MINUTES) - SI-NUMBER IS CONFIRMATION;
 - BOX 2 (- 2 MINUTES) - SI-CHECK AND SIAC TEST
 - BOX 3 (- 1 MINUTE) - MAP COLLECTION (IT IS COMPETITOR RESPONSIBILITY TO PICK THE CORRECT MAP).
 - AFTER TIME START YOU HAVE TO FOLLOW A **175M** MANDATORY ROUTE TO THE START POINT WHICH IS MARKED BY A FLAG IN THE TERRAIN.

- **FINISH PROCEDURES:**

LOOP AIR+ STATION (BS1 1-LOOP) WITH EXTENDED RANGE WILL BE USED FOR THE FINISH. NORMAL RIDE THROUGH THE FINISH LINE.

TRACKING



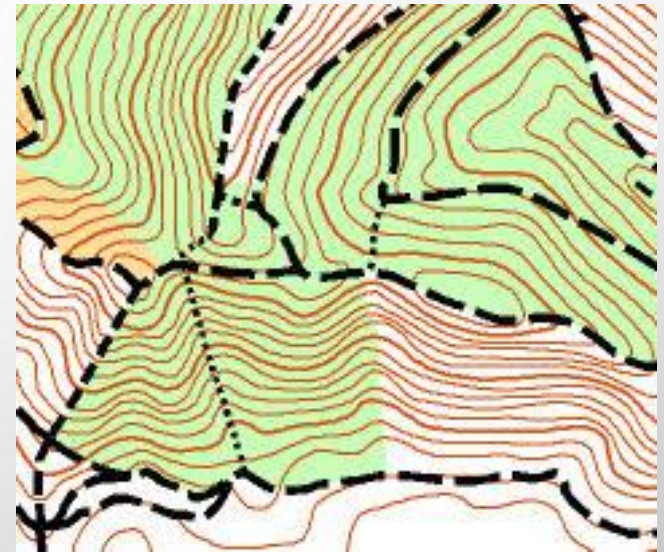
- ATHLETES OF RED AND ORANGE START GROUPS WILL WEARING TRACKING UNITS (GPS). ANOTHER 10 MALE COMPETITORS (START NUMB. 15 TO 24)
 - *DELIVERY OF EQUIPMENT IN QUARANTINE*
 - *THE TRACKING UNIT WILL BE SET BY THE ORGANIZER.*
 - *THE USE OF TRACKING DEVICE IS COMPULSORY*
 - *ITS COMPETITORS RESPONSIBILITY TO ARRIVE IN TIME TO SET THE TRACKING EQUIPMENT*

TECHNICAL INFORMATION



TERRAIN DESCRIPTION

- The long distance area consists mainly of eucalyptus forest, with multiple forest roads and tracks.
- There will be small parts of rugged and hilly terrain with a dense network of forest roads and paths, mostly with a good rideability.
- Thorny vegetation can be found. Therefore puncture protection is strongly recommended.
- It is unlikely that you will come across any vehicles or forest machinery but please be careful as normal to watch for other forest users.
- Some paths have become overgrown. The organizers have done their utmost to clear and flatten vegetation and avoid the worst affected areas, however some track junctions can be difficult to see on the ground. The unclear track junction mapping convention has NOT been used due to the fast changing nature of this problem and for consistency.



TECHNICAL INFORMATION



MAPS

MAP SCALE: **1/15.000**

CONTOURS: **5 METERS**

MAP SIZES: **32 X 38 CM**

PAPER TYPE: **WATERPROOF**

THE COURSE IS PRINTED ON BOTH SIDES OF THE MAP

CONTROL WHERE COMPETITORS TURNING THEIR MAPS IS PRINTED ON BOTH SIDES OF THE MAP

• DISTANCE AND CLIMB

Classes	Length by air (red line)	Length by ideal path	Climb	Controls	Refreshes	Win. times
M21E	25,5 km	37,3 km	1030 m	18	12,5 / 22,5 / 31,8	110'
W21E	20,5 km	27,9 km	875 m	17	10,5 / 19,9 / 22,3	110'

STARTING GROUPS



Red Start Group

Men

(World Rank Pos.) Name - Nat

- (3) Krystof Bogar - CZE (LD Champ)
- (1) Anton Foliforov - RUS
- (2) Simon Braendli - SUI
- (4) Grigory Medvedev - RUS
- (5) Jussi Laurila - FIN
- (6) Ruslan Gritsan - RUS
- (7) Vojtech Ludvik - CZE
- (10) Pekka Niemi - FIN
- (11) Jiri Hradil - CZE
- (12) Luca Dallavalle - ITA

Woman

(World Rank Pos.) Name - Nat

- (1) Martina Tichovska - CZE (LD Champ)
- (3) Antonia Haga - FIN
- (3) Camilla Soegaard - DEN
- (5) Veronika Kubinova - CZE
- (6) Clare Dallimore - GBR
- (8) Marina Reiner - AUT
- (9) Marika Hara - FIN
- (10) Algirda Mickuviene - LTU
- (12) Nadia Larsson - SWE
- (13) Ruska Saarela - FIN

STARTING GROUPS



Orange Start Group

Men

(World Rank Pos.) Name - Nat

- (13) Riccardo Rossetto - ITA
- (14) Lauri Malsroos - EST
- (15) Andreas Waldmann - AUT
- (17) Jonas Maiselis - LTU
- (18) Davide Machado - POR
- (19) Kevin Haselsberger - AUT
- (20) Radek Laciga - CZE
- (22) Viktor Larsson - SWE
- (23) Jan Svoboda - CZE
- (24) Angel Garcia Garcia - ESP

Woman

(World Rank Pos.) Name - Nat

- (14) Sonja Zinkl - AUT
- (15) Gabriele Andradiuniene - LTU
- (18) Anke Dannowski - GER
- (19) Maja Rothweiler - SUI
- (20) Michaela Gigon - AUT
- (21) Katerina Novakova - CZE
- (22) Lou Denaix - FRA
- (23) Caecilie Christoffersen - DEN
- (25) Anastasia Trifilenkova - RUS
- (27) Nadezda Reifova - CZE

OTHER INFORMATION



SPECTATOR CORRIDOR

There is a spectator corridor compulsory, taped.

Competitors are forbidden to short cut or deviate from this route.

Finish corridor from the last control is compulsory as well.

FINAL LOOP

14 % for ME

15 % for WE

REFRESHMENT

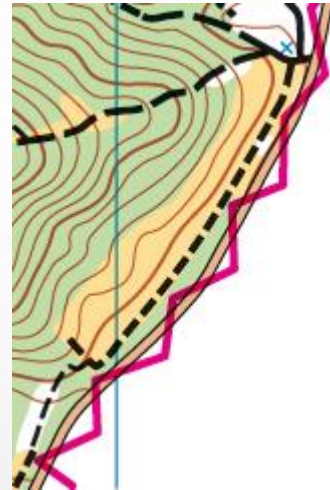
It will be possible for the Elite athletes to receive their own refreshment bottles at the 2nd point (around 60% of the course for ME and 65% for WE), Competitors bottles must be delivered to the **Arena (S. Luís) till 08:00**, clearly labelled with riders name and country.



OTHER INFORMATION



FORBIDDEN ROAD



FIRST AID

A first aid assistance point will be available in the terrain with a 4x4 ambulance to quickly assist to any athlete in need. In case of any eventuality, please go to this point for aid or support.

In case of catastrophic bike mechanical failure although the first aid point will do their best to help riders get back to the finish .

OTHER INFORMATION



- **COMMUNICATION DEVICES**

The use of communication devices (mobile phones etc.) inside the quarantine zones is not allowed.

- **COMPLAINTS**

The time limit for complaints is **14:30**. Complaints received after this time limit will only be considered if there are valid exceptional circumstances which must be explained in the complaint. Any complaint shall be made in writing to the organizer – contact the staff at the finish.

- **PRIZE GIVING**

The Prize giving ceremony starts at **15.00**. in the arena. There are prizes for the 6 best placed women and men in WCup.